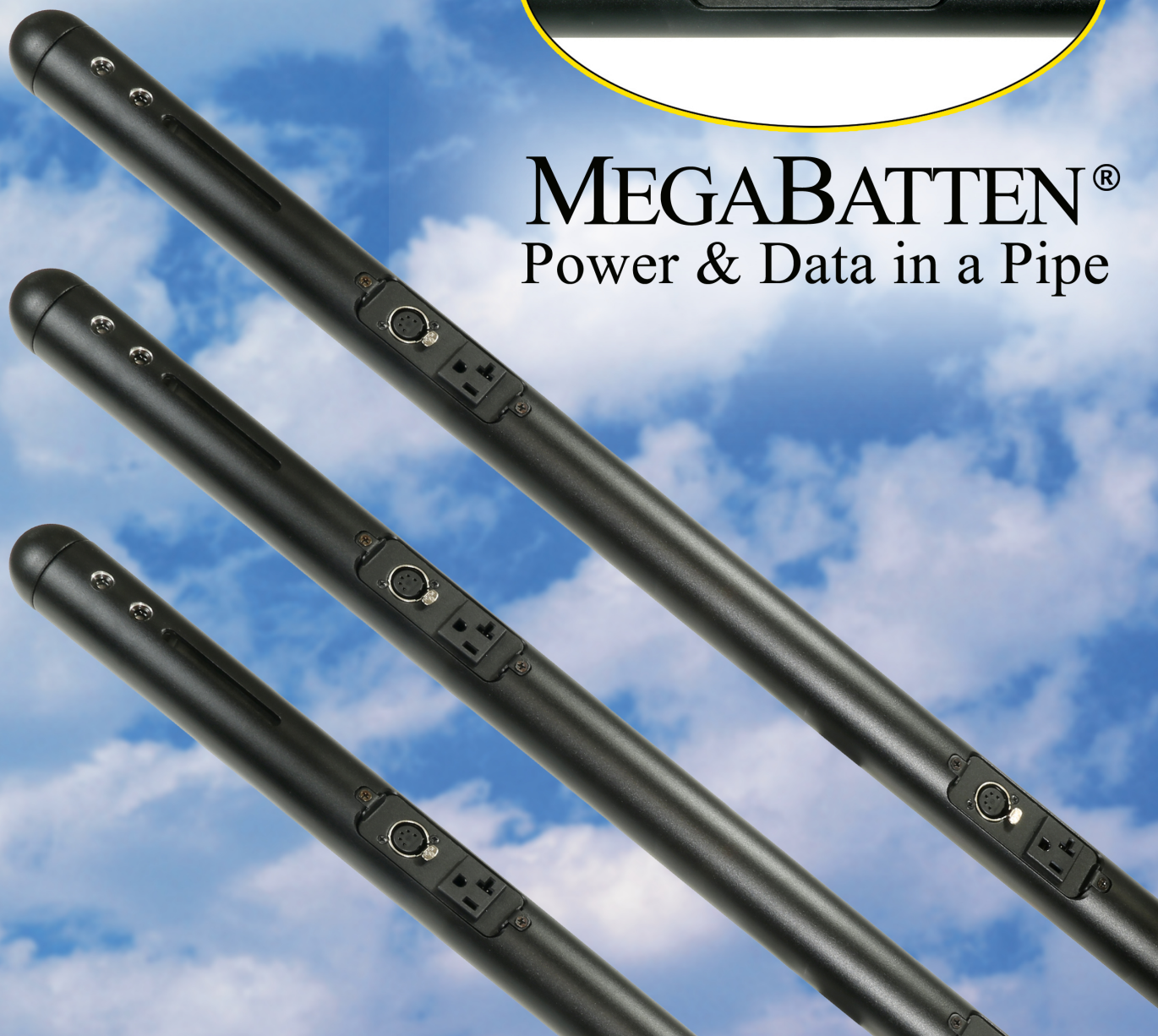




THE LIGHT SOURCE^{INC}

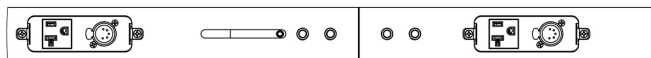


MEGABATTEN[®] Power & Data in a Pipe



The patented MEGABATTEN[®] connector strip has wiring for both power and data inside schedule 80 aluminum pipe. Having the wiring inside the pipe creates a cleaner look and does away with time spent managing unsightly cables. Easily accessible 20-Amp Edison receptacles and 5 pin XLR outlets are spaced every 16". The MEGABATTEN[®] eliminates the need to run DMX from fixture to fixture and creates a quick and easy way to reposition lights. ETL listed with a 30-pound per linear foot loading, the MEGABATTEN[®] makes hanging light fixtures a breeze.

MEGABATTEN®



MEGABATTEN® in fully assembled splice position

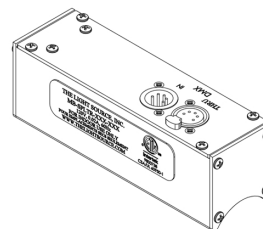


MEGABATTEN® extended for assembly

The patented MEGABATTEN® is constructed from 1-1/2" extra strong schedule 80 aluminum pipe in four standard sizes:

- 96" with six outlets
- 48" with three outlets
- 32" with two outlets
- 16" with one outlet

Lengths of 48 feet or less are recommended for ease of handling and installation. However, the MEGABATTEN'S® ETL listing allows any length up to 100 feet long. 96" lengths are maximized in any configuration, with the shorter pieces added to the end to create the required length. All of the internal wiring is completed at the factory, making installation simple. The power and data wiring is continuous for the entire length of the strip. Internal splices slide out into the next section and are easily locked into place with four 1/2" socket set screws using a 1/4" hex driver.



The New DMX/RDM Splitter

The Light Source DMX splitter box has one input with three isolated outputs. DMX in and thru connectors as well as internal prewired DMX output connections are included. The splitter may be ordered with either 5 pin XLR or RJ45 connectors. Up to two additional splitter cards can be added to accommodate three universes. Each card has its own in and thru connectors. Adding splitter cards increases the length of the splitter box. To ensure DMX signal reliability, every MEGABATTEN® must have a fresh signal from The Light Source DMX splitter or an E-DMX node that is within five feet. The DMX splitter is powered by the MEGABATTEN'S® first 120 Volt circuit. RDM compliant to Ansi E1.20-20 Remote Device Management Over DMX-512 Networks. The DMX input box is also available without the electronic DMX splitter, providing an input connector only.

MEGABATTEN® Features

Up to 100' in length, built from 8', 4', 32", or 16" lengths with internal splices
From 1 to 6 - 20A circuits

Made from 1 1/2" schedule 80 aluminum pipe

Power and data outlet plates on 16" centers

Powder coated, available in matte black, eggshell white, or custom RAL colors

DMX is connected to the MEGABATTEN® in the DMX/RDM splitter. The last plate of the DMX output is terminated.

DMX output connectors available: 5 pin XLR, 3 pin XLR, RJ45

Pre-wired at the factory for ease of installation

The MEGABATTEN® is a connector strip in a pipe that is ETL listed to UL 1573

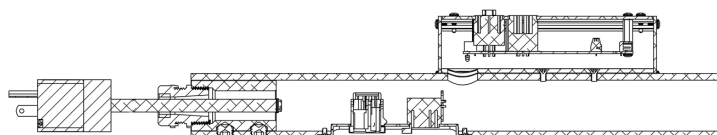
Power Input Options:

Terminal box

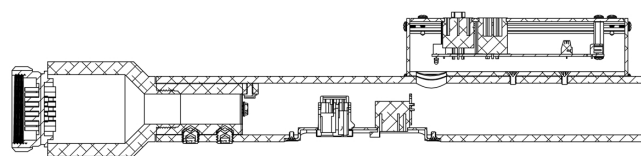
Extended internal conductors to run inside flex or conduit to building junction box

19 pin male circular Socopex type connector

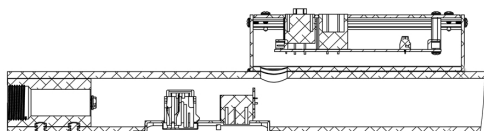
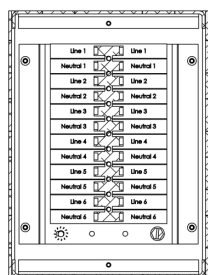
Standard Nema connectors on SO cable, 12/3, 12/4, 12/5



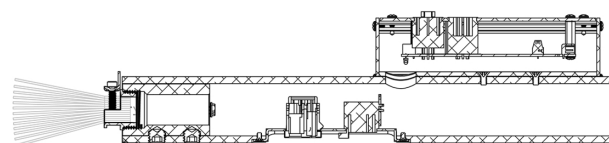
Standard NEMA connectors may be customer installed on SO cable for 1-3 circuits.



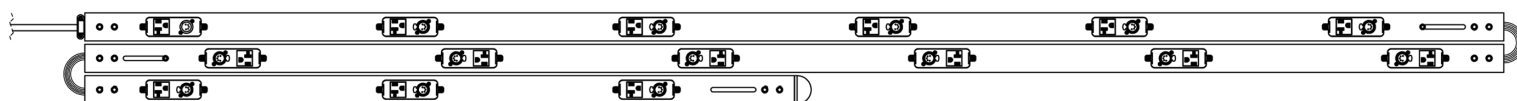
19 pin circular connector power input available



Terminal box for power input is installed on site and may be rotated as needed.



Internal conductors may be extended in customer supplied conduit to building junction box.



The MEGABATTEN® folds to eight foot lengths to save on shipping costs